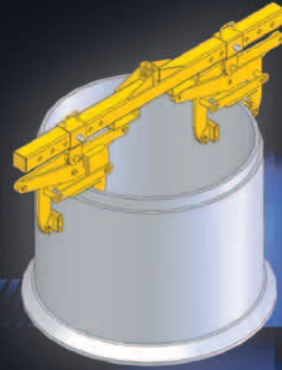


# LANDCON

LIFTING EQUIPMENT AND CONCRETE ACCESSORIES

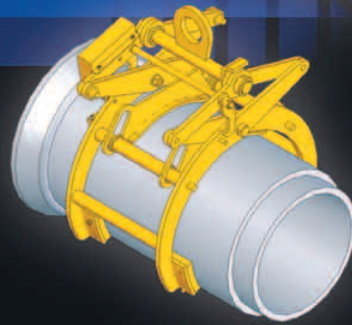
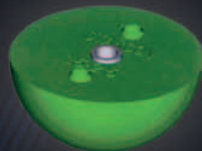
LANDCON

LANDCON



BS V

STARCON  
LIFTING  
ANCHORS



LANDCON

LANDCON

LANDCON

LANDCON



2025

**SERVING THE INDUSTRY SINCE 1991**

[www.landconproducts.com](http://www.landconproducts.com)



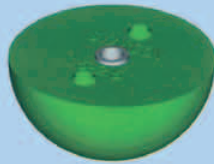
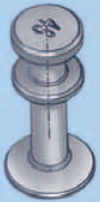
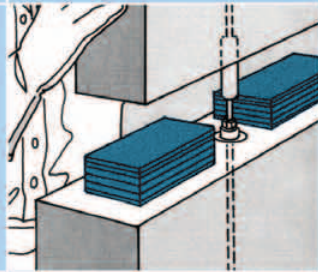
**SAFETY**

**QUALITY**

**SERVICE**

# Contents

Starcon Anchor System . . . . .	page 3-6	Magnets: Magnetic Formers . . . . .	page 16
Starcon Lifting Eyes . . . . .	page 7	Button and Chamfers	
Formers and Steelparts . . . . .	page 8	Plastic Spacers . . . . .	page 17
Ring Clutches & Type R Anchors . . .	page 9	BSV Lifting Equipment . . . . .	page 18-21
Starcon Utility Anchors . . . . .	page 10	Maintenance Steps . . . . .	page 22
Barsplice Couplers & Rebar . . . . .	page 11-13	Starcon Lifting & Turning Device . . .	page 23
Korlath® Bearing Pads & Shims . . . .	page 14-15		



## Starcon Anchor System

Landcon is the North American Distributor for the Starcon Anchor System. The entire line of Starcon lifting products, which we import from Denmark, consists of a complete lifting program for handling concrete panels and pipes: Starcon Anchors, Starcon Lifting Eyes and Starcon Formers are available for safe load ratings between 1T to 32T.

The Starcon Anchor System has been thoroughly tested, is well documented, and meets all demands for quality and safety. It can be used in combination with other systems, provided that the products meet the same demands as the Starcon products in regards to material, strength, and dimensions.

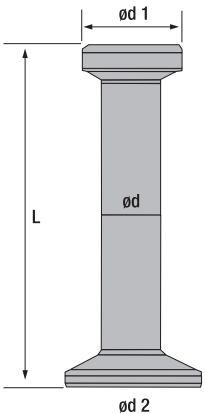
The Starcon Anchor System goes through an extensive quality control program before the products leave the factory. Starcon is ISO 9001-2000 certified and covered by a worldwide insurance policy.

In Addition we have experienced engineers, who are able to calculate choice, position, and lifting strategies for the Starcon Anchors. This service is offered to our customers free of charge.

**Starcon Lifting Anchors**

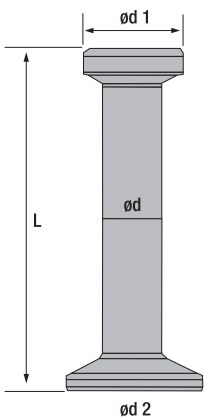


Product	Ton	Anchor Head Mark	Length IN	Length mm	Dimensions (mm)			Weight kg
					d	d1	d2	
1010400	1	1.3	1 1/2"	40mm	10	19	25	0.05
1010550	1	1.3	2 1/4"	55mm	10	19	25	0.07
1010650	1	1.3	2 1/2"	65mm	10	19	25	0.07
1010850	1	1.3	3 3/8"	85mm	10	19	25	0.08
1010200	1	1.3	4 3/4"	120mm	10	19	25	0.01
1012400	1	1.3	9 1/2"	240mm	10	19	25	0.17



Product	Ton	Anchor Head Mark	Length IN	Length mm	Dimensions (mm)			Weight kg
					d	d1	d2	
1030450	2	2.5	1 3/4"	45mm	14	26	35	0.12
1030550	2	2.5	2 1/4"	55mm	14	26	35	0.13
1030680	2	2.5	2 3/4"	68mm	14	26	35	0.15
1030850	2	2.5	3 3/8"	85mm	14	26	35	0.17
1031000	2	2.5	4"	100mm	14	26	35	0.18
1031200	2	2.5	4 3/4"	120mm	14	26	35	0.19
1031400	2	2.5	5 1/2"	140mm	14	26	35	0.21
1031700	2	2.5	6 3/4"	170mm	14	26	35	0.23
1032800	2	2.5	11"	280mm	14	26	35	0.27

## Starcon Lifting Anchors



Product	Ton	Anchor Head Mark	Length IN	Length mm	Dimensions (mm)			Weight kg
					d	d1	d2	
1050650	4	5.0	2 1/2"	65mm	20	36	50	0.32
1050750	4	5.0	3"	75mm	20	36	50	0.34
1050850	4	5.0	3 3/8"	85mm	20	36	50	0.36
1050880	4	5.0	3 1/2"	88mm	20	36	50	0.38
1050950	4	5.0	3 3/4"	95mm	20	36	50	0.40
1051100	4	5.0	4 1/4"	110mm	20	36	50	0.43
1051200	4	5.0	4 3/4"	120mm	20	36	50	0.46
1051340	4	5.0	5 1/4"	134mm	20	36	50	0.48
1051400	4	5.0	5 1/2"	140mm	20	36	50	0.49
1051500	4	5.0	5 7/8"	150mm	20	36	50	0.52
1051600	4	5.0	6 1/4"	160mm	20	36	50	0.56
1051800	4	5.0	7 1/8"	180mm	20	36	50	0.61
1052100	4	5.0	8 1/4"	210mm	20	36	50	0.69
1052400	4	5.0	9 1/2"	240mm	20	36	50	0.76
1053400	4	5.0	13 3/8"	340mm	20	36	50	1.01
1054800	4	5.0	18 7/8"	480mm	20	36	50	1.36

Product	Ton	Anchor Head Mark	Length IN	Length mm	Dimensions (mm)			Weight kg
					d	d1	d2	
1070850	6	7.5	3 3/8"	85mm	24	47	60	0.51
1071200	6	7.5	4 3/4"	120mm	24	47	60	0.73
1071400	6	7.5	5 1/2"	140mm	24	47	60	0.81
1071500	6	7.5	5 7/8"	150mm	24	47	60	0.84
1071650	6	7.5	6 1/2"	165mm	24	47	60	0.89
1072000	6	7.5	7 7/8"	200mm	24	47	60	1.01
1073000	6	7.5	11 7/8"	300mm	24	47	60	1.36
1075400	6	7.5	21 1/4"	540mm	24	47	60	2.24
1076800	6	7.5	26 3/4"	680mm	24	47	60	2.60

Product	Ton	Anchor Head Mark	Length IN	Length mm	Dimensions (mm)			Weight kg
					d	d1	d2	
1100750	8	10.0	3"	75mm	28	47	70	0.55
1101200	8	10.0	4 3/4"	120mm	28	47	70	0.93
1101350	8	10.0	5 1/4"	135mm	28	47	70	1.03
1101500	8	10.0	5 7/8"	150mm	28	47	70	1.09
1101600	8	10.0	6 1/4"	160mm	28	47	70	1.14
1101700	8	10.0	6 3/4"	170mm	28	47	70	1.18
1101800	8	10.0	7 1/8"	180mm	28	47	70	1.23
1102100	8	10.0	8 1/4"	210mm	28	47	70	1.44
1102200	8	10.0	8 3/4"	220mm	28	47	70	1.49
1102500	8	10.0	10"	250mm	28	47	70	1.56
1103400	8	10.0	13 3/8"	340mm	28	47	70	1.98
1106800	8	10.0	26 3/4"	680mm	28	47	70	3.57



Product	Ton	Anchor Head Mark	Length IN	Length mm	Dimensions (mm)			Weight kg
					d	d1	d2	
1151650	12	15.0	6 1/2"	165mm	34	70	85	1.97
1152000	12	15.0	7 7/8"	200mm	34	70	85	2.21
1153000	12	15.0	11 7/8"	300mm	34	70	85	2.91
1154000	12	15.0	15 3/4"	400mm	34	70	85	3.59
1202000	20	20.0	7 7/8"	200mm	39	70	98	2.7
1202500	20	20.0	10"	250mm	39	70	98	3.3
1203400	20	20.0	13 3/8"	340mm	39	70	98	4.38
1205000	20	20.0	19 3/4"	500mm	39	70	98	5.87
1210000	20	20.0	39 1/2"	1000mm	39	70	98	11.75

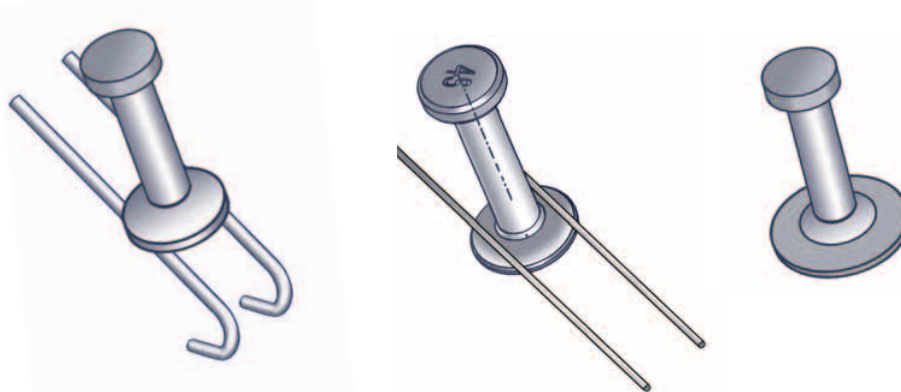
## Specialty Anchors

### Double Headed Anchors



Product	Ton	Anchor Head Mark	Length IN	Length mm	Weight kg
1030550DH	2	2	2 1/4"	55mm	0.12
1030850DH	2	2	3 3/8"	85 mm	0.16
1030120DH	2	2	4 3/4"	120mm	0.21
1030170DH	2	2	6 3/4"	170mm	0.27
1050650DH	4	4	2 1/2"	63.5 mm	0.34
1050900DH	4	4	3 1/2"	90 mm	0.40
1050110DH	4	4	4 1/4"	110 mm	0.46
1050140DH	4	4	5 1/2"	140mm	0.54

### Custom sizes available



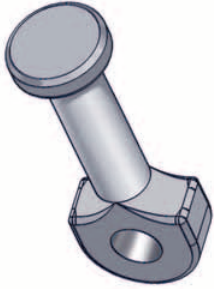
### Custom Welded Anchors Available

Safety factor approximately 4:1

Anchors available hot-dipped galvanized

1 ton = 2000 lbs.

## Eye Anchors



Product	Ton	Anchor Head Mark	Length IN	Length mm	Weight kg
1030900EYE	2	2.5	3 1/2"	90 mm	0.18
1040120EYE	4	5	4 3/4"	120 mm	0.43
1101150EYE	8	10.0	4 1/2"	115 mm	0.9
1101800EYE	8	10.0	7 1/8"	180 mm	1.23
1202500EYE	20	20.0	10"	250 mm	3.3

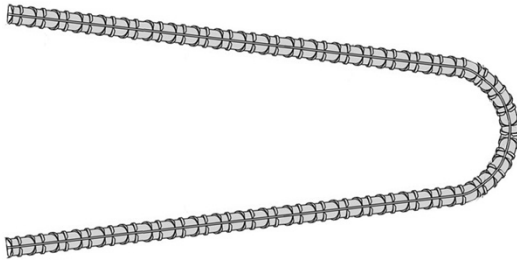
## Tension Bar

For use with the Eye Anchors.

Available in standard dimensions for 2T-20T capacity.

Custom dimensions / bends available.

All rebar MTO DSM material.

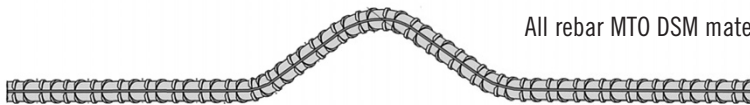


## Shear Bar

Available in standard dimensions for 2T-20T capacity.

Custom dimensions available.

All rebar MTO DSM material.



Starcon Lifting Eyes are designed for years of safe and efficient use. Starcon Lifting Eyes can be used in combination with other dog-bone style anchors, provided they meet the same standards as the Starcon products in regard to material, strength, and dimensions.

Before leaving the factory a number of checks are performed insuring that every lifting eye complies with our strict standards. The material and dimensional specifications are checked. From there, random lifting eyes undergo destructive testing to confirm their ultimate capacity. Following that, every lifting is bench tested to twice the safe working load, stamped with a serial number, and issued a test certificate. These checks help to insure the safety of you, and your customers.



### Starcon Lifting Eye With Standard Link

Product	Tons	Lifting Body Mark	Safe Work Load	
			lbs.	Weight kg
2010131	1	1.0 / 1.3 T	2000	1
2030251	2	1.5 / 2.5 T	4000	2
2050501	4	3.0 / 5.0 T	8000	3
2101001	8	6.0 / 10.0 T	16000	10
2202001	12-20	12.0 / 20.0 T	40000	18



### Starcon Lifting Eye With Chain Link

Product	Tons	Lifting Body Mark	Safe Work Load	
			lbs.	Weight kg
2010133	1	1.0 / 1.3 T	2000	1
2030253	2	1.5 / 2.5 T	4000	2
2050503	4	3.0 / 5.0 T	8000	3
2101003	8	6.0 / 10.0 T	16000	10
2202003	12-20	12.0 / 20.0 T	40000	18



### “DEHA/Dayton” Style Lifting Eye

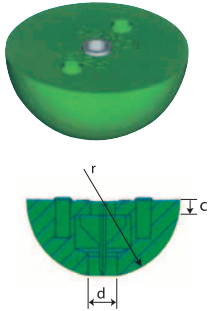
Product	Tons	Lifting Body Mark	Safe Work Load	
			lbs.	Weight kg
590080	1	1.0 / 1.3 T	2000	1
590081	2	1.5 / 2.5 T	4000	2
590082	4	3.0 / 5.0 T	8000	3
590083	8	6.0 / 10.0 T	16000	10
590084	12-20	12.0 / 20.0 T	40000	18

#### Please Note:

The Starcon lifting eyes should be checked once per year, or at the latest 12 months after the first use. They should be checked for possible damages and wear and tear. At considerable wear, stroke marks, or the like, the Starcon lifting eye should be scrapped. Modifications or repairs, especially weldings, of the Starcon lifting should never occur.

Safety factor is approximately 5:1

## Starcon Formers



Product	Tons	Marking	Color	Dimension mm			weight kg
				d	r	c	
3010130	1	1.0 / 1.3 T	Violet	10	30	10	0.22
3030250	2	1.5 / 2.5 T	Green	14	37	12	0.46
3050500	4	3.0 / 5.0 T	Red	20	47	18	0.78
3070750	6	6.0 / 7.5 T	Orange	24	59	19	1.48
3101000	8	8.0 / 10.0 T	Orange	28	59	19	1.48
3151500	12	12.0 / 15.0 T	Gray	34	80	20	3.2
3202000	20	16.0 / 20.0 T	Blue	39	80	20	3.2

## Threaded Bolt w/ Plate and Wingnut



Product	Tons
3010130	1
4030250	2
4050500	4
4101000	6
4101000	8
4202000	12
4202000	20



## Threaded Nut w/ Plate

Product	Tons
4010131	1
4030251	2
4050501	4
4101001	6
4101001	8
4202001	12
4202001	20

## Starcon Steel Former



Product	Tons	Marking
4510130	1	1.0 / 1.3 T
4530250	2	1.5 / 2.5 T
4550500	4	3.0 / 5.0 T
4550010	8	6.0 / 10 T

## Starcon Grommets for Steel or Magnetic Former

Product	Tons
4010213G	1
4030225G	2
4050250G	4
4050275G	6
4050275G	8

## Starcon Magnetic Steel Former



Product	Tons	Marking
4011013	1	1.0 / 1.3 T
4031025	2	1.5 / 2.5 T
4050051	4	3.0 / 5.0 T
4050010	8	6 / 10 T



## Ring Clutch with Solid Link



Ring Clutch with Solid Link consists of a bail, clutch and curved bolt handle. To install, rotate the curved bolt to the opened position and insert the clutch into the recess. To lock onto the anchor, rotate the curved bolt handle until the handle contacts the panel surface.

Product	Tons	Safe Work Load	Lifting body mark	weight kg
56009025N	2-3	6000lbs.	2-3 T	2
56009050N	4-6	12000 lbs.	4-6 T	3
56009100N	8-11	22000 lbs.	8-11 T	8

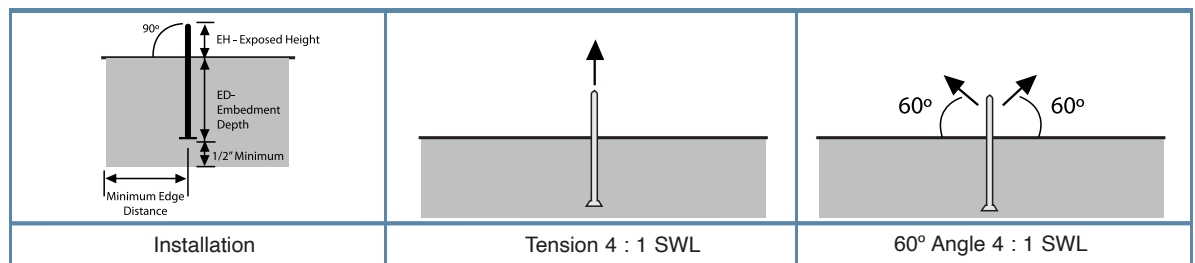
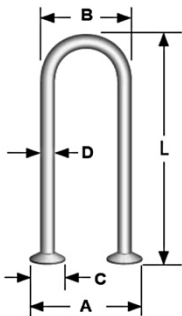
### Please Note:

The Starcon Ring Clutches should be checked once per year, or at the latest 12 months after the first use. They should be checked for possible damages and wear and tear. At considerable wear, stroke marks, or the like, the Starcon lifting eye should be scrapped. Modifications or repairs, especially weldings, of the Starcon lifting should never occur. Safety factor is approximately 5:1

## Starcon Type-R Block Anchors



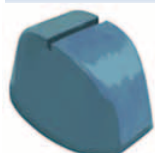
Part Number	Size	WD	W	D	L	SWL Lbs	Weight kg
R1462G	1/4" x 6"	0.25"	2-5/8"	1/2"	6"	1600	0.80
R516652G	5/16" x 6 1/2"	0.315"	2-5/8"	3/4"	6-1/2"	3200	0.157
R3872G	3/8" x 7"	0.375"	2-3/4"	1"	7"	4690	0.24
R71692G	7/16" x 9"	0.45"	3-1/2"	1"	9"	7500	0.476
R716112G	7/16" x 11"	0.45"	3-1/2"	1"	11"	7500	0.57
R716182G	7/16" x 18"	0.45"	3-1/2"	1"	18"	7500	0.905



Description Size	EH - Exposed height		ED - Embedment depth		Minimum Edge distance		Tension 4 : 1 SWL				60° Angle 4 : 1 SWL													
	inches	MM metric	inch	MM metric	inch	MM metric	lbs	kg	lbs	kg	lbs	kg	lbs	kg	lbs	kg								
99.17R14060	1/4" x 6"	6.5 x 152	2 1/2"	63.5	3 1/2"	88.9	8	203	1.525	692	1.600	726	1.600	726	1.600	726	1.600	726	1.600	726	1.600	726	1.600	726
99.17R51665	5/16" x 6 1/2"	8.0 x 165	2 1/2"	63.5	4	101.6	9	229	2.110	957	2.585	1.173	2.985	1.354	3.200	1.451	2.745	1.245	3.200	1.451	3.200	1.451	3.200	1.451
99.17R38070	3/8" x 7"	9.5 x 178	2 1/2"	63.5	4 1/2"	114.3	10	254	3.275	1.486	4.015	1.821	4.635	2.102	4.690	2.127	3.660	1.660	4.480	2.032	4.690	2.127	4.690	2.127
99.17R71690	7/16" x 9"	11.4 x 229	3	76.2	6	152.4	12	305	5.475	2.483	6.700	3.039	7.500	3.402	7.500	3.402	6.555	2.973	7.500	3.402	7.500	3.402	7.500	3.402
99.17R71611	7/16" x 11"	11.4 x 279	3	76.2	8	203.2	12	305	7.475	3.391	7.500	3.402	7.500	3.402	7.500	3.402	7.500	3.402	7.500	3.402	7.500	3.402	7.500	3.402

## Starcon R-Anchor Rubber Former

Product Number	Wire Dia.
R14F	1/4"
R516F	5/16"
R38F	3/8"
R716F	7/16"



\*Recessed from concrete surface

\*For lifting and handling of thin slabs, design needs to ensure slab is properly reinforced to prevent cracking due to the flexing of the anchor.

\*Indicates mechanical strength of anchor is achieved.

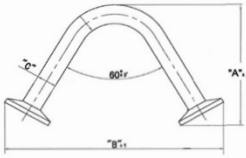
\*Above capacities are based upon mechanical testing and concrete testing

## Utility Anchors

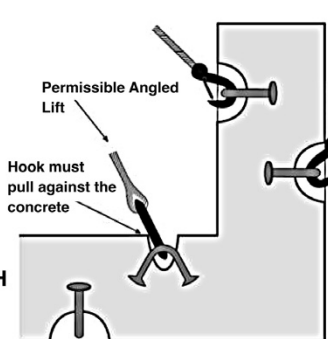
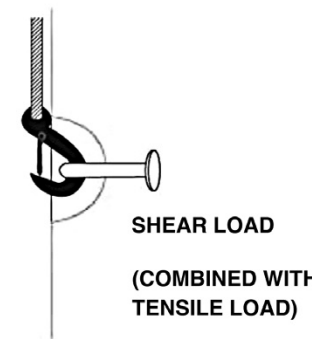
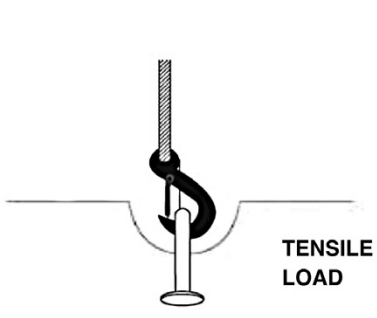


Part Number	Anchor Identification	Typical Slab Thickness	WD-Wire Diameter	W-Width	H-Height	Fd - Foot Diameter
LUAG44	4/4	4"	.444	5-1/4"	3-1/8"	3/4"
LUAG54	5/4	5"	.444	6"	3-3/4"	3/4"
LUAG64	6/4	6"	.444	7-3/8"	4-3/4"	3/4"
LUAG56	5/6	5"	.671	6-7/8"	3-3/4"	1-5/8"
LUAG66	6/6	6"	.671	7-3/8"	4-3/4"	1-5/8"
LUAG86	8/6	8"	.671	9-3/4"	6-3/4"	1-5/8"
LUAG12875	12/875	12"	.875	15-7/8"	11"	2"

## Utility Anchors .444", .671" and .875"



Part Number	Min. Panel Thickness	Min. Edge Distance	Anchor Dimension			Safe Working Load Tension 90 (lbs)	Safe Working Shear 90 (lbs)	Safe Working Tension/Shear 45
			A	B	C			
LUAG44	4"	9"	3-1/8"	5-1/4"	0.444"	3,298	5,277	2,269
LUAG54	5"	10"	3-3/4"	6"	0.444"	3,298	5,277	2,730
LUAG64	5-5/8"	12"	4-3/4"	7-3/8"	0.444"	3,298	7,277	3,150
LUAG56	5"	10"	3-3/4"	6-7/16"	0.671"	4,708	8,324	3,220
LUAG66	5-5/8"	12"	4-3/4"	7-3/8"	0.671"	7,533	12,053	5,170
LUAG86	12-5/8"	16"	6-3/4"	9-3/4"	0.671"	8,045	15,390	7,660
LUAG12875	12"	30"	11"	15-7/8"	0.875"	24,000	24,000	N/A



Safe Working Load provides a factor of safety of approximately 4:1.  
Table is based on a minimum concrete compressive strength of 4,000 psi.

### Utility Anchor Rubber Formers

Part Number	Wire Dia.
LUA450	.444
LUA670	.671

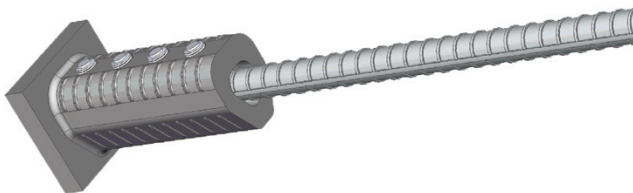
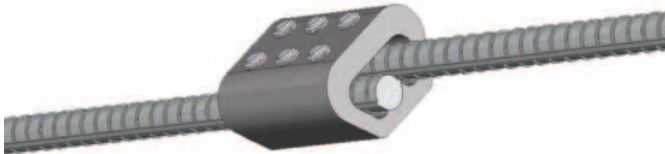
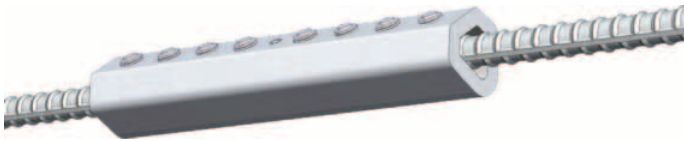


### Utility Anchor Setting Plate

Part Number	Former
LUA45HP	LUA450
LUA670HP	LUA670



## Zap Screwlok®



### Zap Screwlok – SL, Type 2 & Epoxy

Shear Screw & Wedge Coupling Sleeve

- Retrofit or repair existing structures
- Eliminate expensive rebar-welds
- Connect bars across closure pours
- No specialized equipment required. For quickest installation, use a standard air impact wrench.
- Sizes available: 10M – 55Min both Standard (SL series) and High Strength (Type 2 series)

Simple installation - Screws embed into the rebar surface while the rebar deformations interlock within the coupler wall resulting in a full positive connection for transferring tension or compression force. Available in black, epoxy-coated and galvanized finishes and for connecting two different bar diameters (transition application).

### Double Barrel Zap Screwlok

Shear Screw and Double Wedge Mechanical Lap Splice

- Applications: widen bridges, slab repair, closure pours, connect hoop bars in piles to terminate spirals
- Compact Design – significantly shorter than mechanical butt splices and lap splices
- No specialized equipment needed. A standard air impact wrench is sufficient.
- Sizes available: 10M – 25M

### Zap T-Lok

Shear Screw and Wedge Headed Device

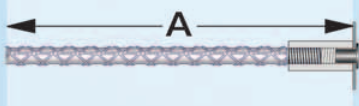
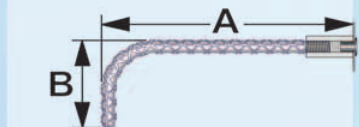
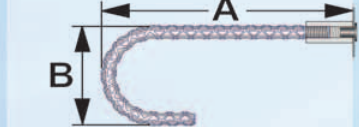
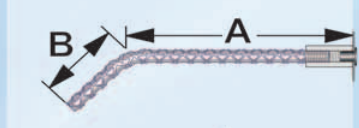
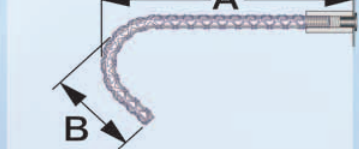

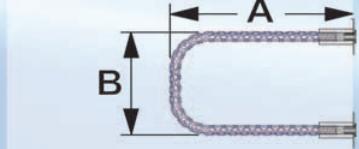
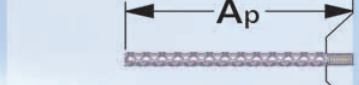
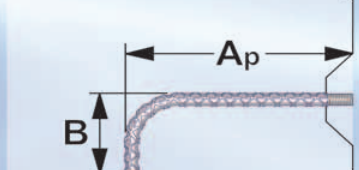
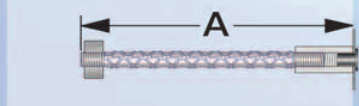
- Applications: Replaces hooks and alleviates congestion.
- Field Installed: No threading required. Ideal for repair or retrofit.
- Transmits bond force from the rebar to concrete through head bearing.
- Head area- Exceeds 9Ab net bearing in tension.

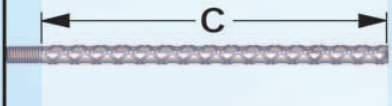
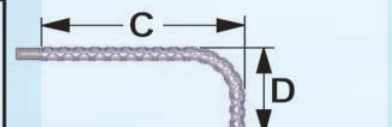
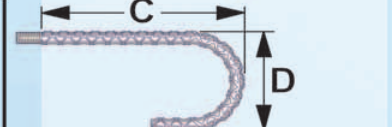
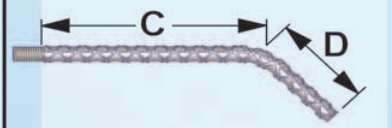
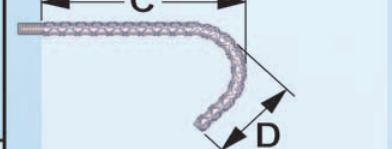
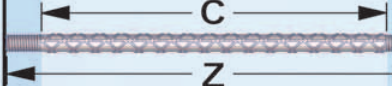
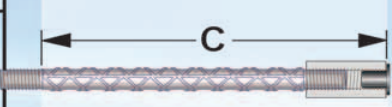
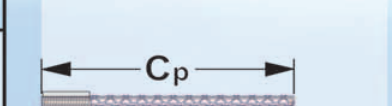
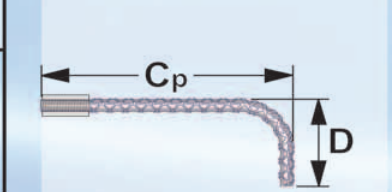
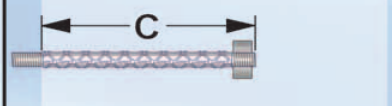
## BPI Standard BarSplicer

Coupler with Standard National Coarse Threads and Flange

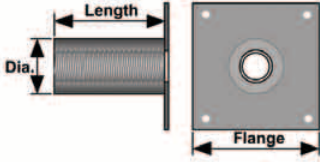
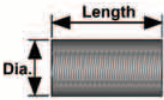
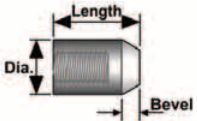
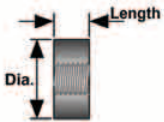
- Pre-fabricated Setting & Splice Bars – Made by BPI to your dimensions, straight, hooked, single or double ended connections, etc.
- Epoxy coated and Galvanized finished available

- Dowel Bar Replacement – No drilling holes through forms. Flanged couplers have holes that permit nailing to the sides or ends of formwork.
- XP Series – MTO approved. Bars supplied by BPI exceed 150% Fy, Metric Grade 400 uncoated bar.

SETTING BAR OPTIONS AND PART NUMBERS		
BS-B	<b>STRAIGHT</b> Specify 'A'	
BS-F	<b>90° BEND</b> Specify 'A' & 'B'	
BS-E	<b>180° HOOK</b> Specify 'A'	
BS-C	<b>45° BEND</b> Specify 'A' & 'B'	
BS-Q	<b>135° BEND</b> Specify 'A' & 'B'	
BS-A	<b>DOUBLE END</b> Specify 'A'	
BS-D	<b>U-SHAPE DOUBLE END</b> Specify 'A' & 'B'	
BS-J	<b>POSITIONAL STRAIGHT</b> Specify 'Ap'	
BS-K	<b>POSITIONAL 90° BEND</b> Specify 'Ap' & 'B'	
BS-S	<b>HEADED STRAIGHT</b> Specify 'A'	

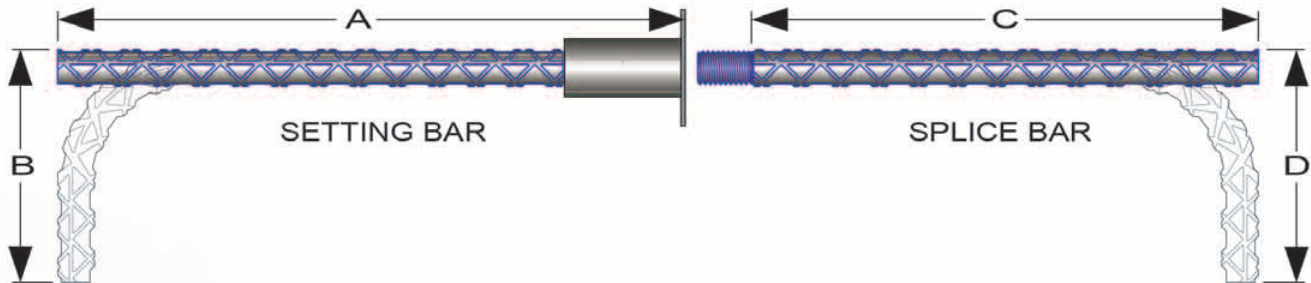
SPLICE BAR OPTIONS AND PART NUMBERS		
BS-H	<b>STRAIGHT</b> Specify 'C'	
BS-G	<b>90° BEND</b> Specify 'C' & 'D'	
BS-I	<b>180° HOOK</b> Specify 'C'	
BS-P	<b>45° BEND</b> Specify 'C' & 'D'	
BS-R	<b>135° BEND</b> Specify 'C' & 'D'	
BS-O	<b>DOUBLE END</b> Specify 'C' & 'Z'	
BS-N	<b>CONTINUITY DOUBLE END</b> Specify 'C'	
BS-L	<b>POSITIONAL STRAIGHT</b> Specify 'Cp'	
BS-M	<b>POSITIONAL 90° BEND</b> Specify 'Cp' & 'D'	
BS-T	<b>HEADED STRAIGHT</b> Specify 'C'	



	REBAR SIZE	THREAD SIZE	WEIGHT (lbs)	LENGTH (in)	DIAMETER (in)	FLANGE (in)	BEVEL (in)
<b>BPI® BARSPLICER FLANGED COUPLER</b> 	4	1/2 – 13 UNC	0.28	1 3/4	7/8	2 x 2	–
	5	5/8 – 11 UNC	0.35	2	1	2 x 2	–
	6	3/4 – 10 UNC	0.40	2 1/8	1 1/8	2 x 2	–
	7	7/8 – 9 UNC	0.50	2 1/2	1 1/4	2 x 2	–
	8	1 – 8 UNC	0.90	3	1 1/2	2 x 2	–
	9	1 1/8 – 7 UNC	1.50	3 1/2	1 3/4	3 x 3	–
	10	1 1/4 – 7 UNC	2.35	4	2	3 x 3	–
<b>BPI® BARSPLICER POSITION COUPLER</b> 	4	1/2 – 13 UNC	0.22	1 3/4	7/8	–	–
	5	5/8 – 11 UNC	0.30	2	1	–	–
	6	3/4 – 10 UNC	0.35	2 1/8	1 1/8	–	–
	7	7/8 – 9 UNC	0.50	2 1/2	1 1/4	–	–
	8	1 – 8 UNC	0.90	3	1 1/2	–	–
	9	1 1/8 – 7 UNC	1.50	3 1/2	1 3/4	–	–
	10	1 1/4 – 7 UNC	2.35	4	2	–	–
<b>PI® BARSPLICER STRUCTURAL CONNECTOR</b> 	4	1/2 – 13 UNC	0.15	1 3/8	7/8	–	3/16
	5	5/8 – 11 UNC	0.20	1 1/2	1	–	1/4
	6	3/4 – 10 UNC	0.40	1 3/4	1 1/4	–	1/4
	7	7/8 – 9 UNC	0.50	2	1 3/8	–	5/16
	8	1 – 8 UNC	0.85	2 1/4	1 5/8	–	3/8
	9	1 1/8 – 7 UNC	1.05	2 5/8	1 3/4	–	7/16
	10	1 1/4 – 7 UNC	1.50	3	2	–	1/2
<b>BPI® BARSPLICER DoughNUT™</b> 	4	1/2 – 13 UNC	0.22	3/4	1 1/4	–	–
	5	5/8 – 11 UNC	0.37	7/8	1 1/2	–	–
	6	3/4 – 10 UNC	0.55	15/16	1 3/4	–	–
	7	7/8 – 9 UNC	0.95	1 1/4	2	–	–
	8	1 – 8 UNC	1.42	1 5/16	2 3/8	–	–
	9	1 1/8 – 7 UNC	2.15	1 1/2	2 3/4	–	–
	10	1 1/4 – 7 UNC	2.50	1 5/8	2 7/8	–	–
11	1 3/8 – 6 UNC	3.75	1 7/8	3 1/4	–	–	

## HOW TO ORDER BPI® BARSPLICER SETTING AND SPLICE BARS

The most commonly used splice and setting bars are STRAIGHT or have a 90 DEGREE HOOK as follows...



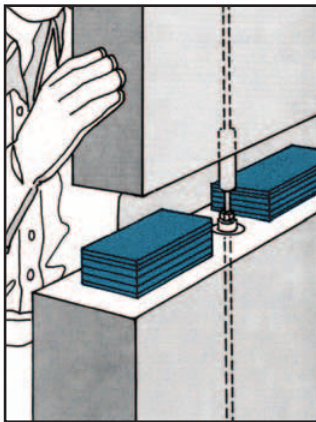
The following chart is an easy way to organize your BPI Barsplicer requirements. Many other configurations can be ordered as shown on the BPI Barsplicer configuration chart... just include the BPI PART NUMBER for easy reference.

QUANTITY	BAR SIZE	BLACK OR EPOXY	SETTING BARS					SPLICE BARS					
			FLANGE Y/N	BPI PART NUMBER See Chart	SPECIFY LENGTHS (FEET - INCHES)			BPI PART NUMBER See Chart	SPECIFY LENGTHS (FEET - INCHES)				
					'A'	'B'	OTHER		'C'	'D'	OTHER		



Korolath® is an engineered, multi-polymer plastic specifically formulated for use in the construction industry as a bearing and shimming material.

- Will not stain or rust
- Gives permanent support
- Not affected by alkali, micro organisms or rot
- Easy to use and lightweight
- Scored for use at various lengths



## Shim Packs

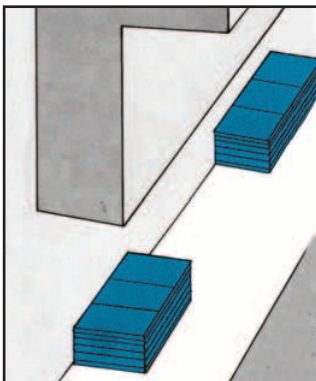
Korolath® Shim Packs are pre-assembled packages of Korolath Shims that are designed for precise placing and leveling of large scale precast panels. Shim Packs should be used in grouted applications only. Custom configurations available per your requirements. Also available with heat sealed edge.

Popular sizes are: 3"x 3", 4"x 4", 4"x 6" and 6"x 6"

Scored in 2", 3" or 4" lengths for easy snap-off

Typical Shim Packs are 1-1/16" thick and consist of (1) 1/16", (2) 1/8", (3) 1/4"

Available in thicknesses from 1/2" to 2-1/16"

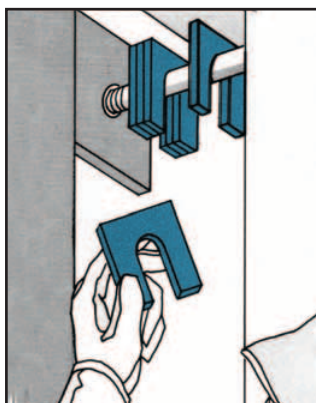


## Shim Strips

Korolath® Shim Strips are available in thicknesses of 1/16", 1/8" and 1/4" in 24" lengths.

Shim Strips are scored in 2", 3" or 4" lengths for easy snap-off.

Common widths are 2", 3" and 4". Other widths are available.



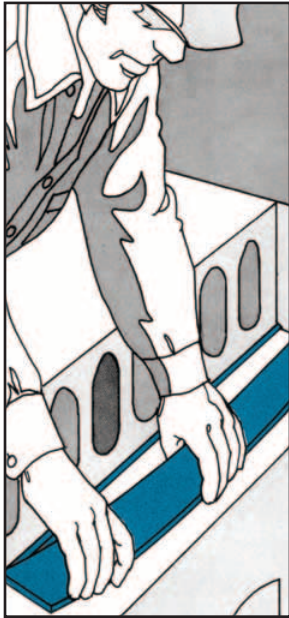
## Horseshoe Spacers

Korolath® Horseshoe Spacers are commonly used in vertical applications that require a slot to fit a bolt.

Horseshoe Spacers come in thicknesses of 1/16", 1/8", 1/4", 3/8" and 1/2".

Popular sizes are: 2"x 3", 3"x 4", and 4"x 4".

Other sizes and slot dimensions available per your requirements.



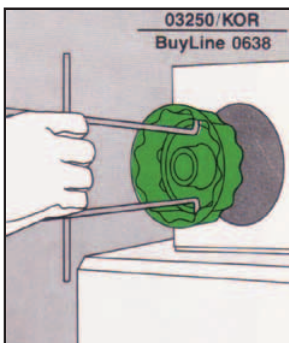
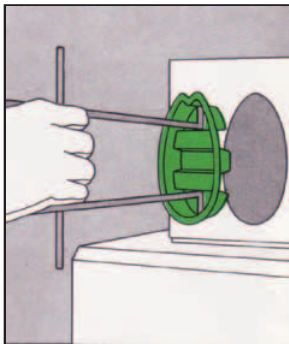
## Bearing Strips

Korolath® Bearing Strips are commonly used for hollowcore planks and precast slabs. Bearing Strips come in thicknesses of 1/16", 1/8" and 1/4". Standard lengths of 40" and 48". Standard width of 24" scored in either 2", 3" and 4" intervals for easy snap off. Custom configurations available per your requirements.

## Bearing Pads

Neoprene Bearing Pads are load transferring, shock impacting, and able to contract and expand where needed. They also absorb vibration and noise. Available in Neoprene in 50, 60 and 70 durometer hardness, 1/8" to 1" thick, Random Oriented Fiber (ROF), Rubber-Coated Fabric (8oz. duck cloth and synthetic rubber), and Teflon (self lubricating fluorocarbon resins). Call for further information.

## CUSTOM SHIMS AVAILABLE



## Coreplugs

- Coreplugs are supplied to the manufacturers and erectors of pre-stressed and other hollow core planks.
- The plugs are easy to insert and effectively block off grout flow to insure solid load bearing transfer through the ends of the planks on to the sills and foundation.
- Plugs push in "hard" for tight interference fit with a positive stop bar on the pusher to insure "exact" depth fill; and savings on expensive non-shrink grout.
- Fluted wall taper design can't fall over; Air escape notches prevent "no fill" pockets.
- Units are light weight, low cost and nest for convenient storage.
- Round plugs now available are 4, 4 1/2", 6, 6 3/8", 7 1/2", 7 5/8", 8", 9" and 9 5/8" in diameter. These are for plank cores such as Flexicore, Spiroll and others; Round plugs are also used to block off the ends of spiral wound paper tubes.
- Non-round plugs are available for Spancrete and Dycore – others are being developed.

## Magnetic Urethane Formers

Designed to allow the installation of Lifting Pin Anchors in a steel form using a one-piece urethane recess with a magnet embedded in the top of the recess.

<b>1TDBMRM</b>	1 Ton Dog Bone Magnetic Recess Former
<b>2TDBMRM</b>	2 Ton Lift Pin Magnetic Recess Former
<b>4TDBMRM</b>	4 Ton Dog Bone Magnetic Recess Former
<b>8TDBMRM</b>	8 Ton Dog Bone Magnetic Recess Former
<b>20TDBMRM</b>	20 Ton Dog Bone Magnetic Recess Former
<b>440CONURMM</b>	449.5 Magnetic Utility Anchor Recess Former .440
<b>670CONURMM</b>	679.5 Magnetic Utility Anchor Recess Former .670



## Push Button Form Magnets

Tradesman Series Button Magnets are a reliable and sturdy solution to hold down your concrete forms. Tough and durable, this magnet is designed to withstand the toughest job site conditions, while remaining highly economical. Offered in holding capacities ranging from 1000lbs to 2.5 Tons.

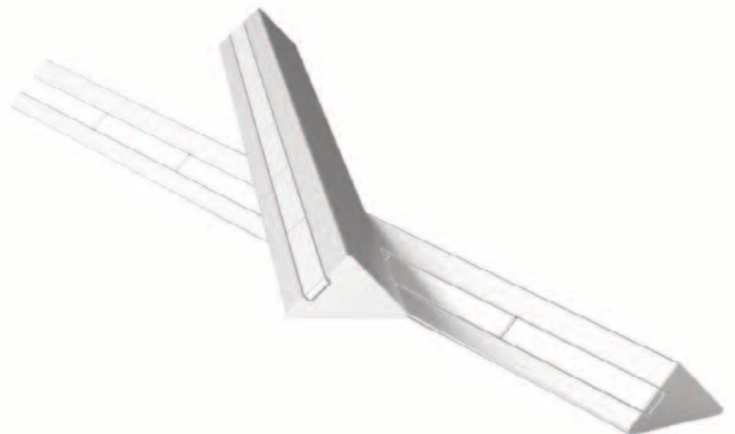
<b>5TBM-TS</b>	Tradesman Series 1/2 Ton Button Magnet
<b>1TBM-TS</b>	Tradesman Series 1 Ton Button Magnet
<b>2.5TBM-TS</b>	Tradesman Series 2.5 Ton Button Magnet



## Magnetic Steel and Flexible Urethane Chamfer

Steel Magnetic Chamfer and Reveal is designed to create beveled edges on the corners and faces of concrete wall panels, allowing for easy removal and a decorative touch. Custom profiles are also available.

<b>CHAM-500SCH</b>	Magnetic Steel Chamfer 1/2" x 10' Length
<b>CHAM-750SCH</b>	Magnetic Steel Chamfer 3/4" x 10' Length
<b>CHAM-1000SCH</b>	Magnetic Steel Chamfer 1" x 10' Length
<b>CHAM-500FMC90-10</b>	Flexible Chamfer Magnetic 1/2" X 10' Length (90 shore)
<b>CHAM-750FMC90-10</b>	Flexible Chamfer Magnetic 3/4" x 10' Length (90 shore)
<b>CHAM-1500FMC9010</b>	Flexible Chamfer Magnetic 1.5" X 1" X 10' Length (90 shore)



\*additional sizes and dimensions available



**CV Rebar Wheels** are designed for vertical bar reinforcements in the precast & most on site applications. C V Rebar Wheels provide equal spacing for vertical bars used in walls, beams, & columns.



SKU	Cover	Bar size	lbs/Bag	Qty/Bag
CVW10-25	1"	#3 - #4	14	500
CVW12-25	1"	#3 - #4	14	500
CVW15-25	1"	#4 - #5	14	500
CVW10-40	1 1/2"	#3 - #4	14	400
CVW15-40	1 1/2"	#4 - #5	16	400
CVW20-40	1 1/2"	#6 - #7	14	300
CVW10-45	1 3/4"	#3 - #4	17	300
CVW10-50	2"	#3 - #4	15	300
CVW15-50	2"	#4 - #5	20	300
VW20-50	2"	#6 - #7	18	300
CVW15-63	2 1/2"	#4 - #5	37	250
CVW20-63	2 1/2"	#6 - #7	37	250
CVW15-75	3"	#4 - #5	25	135
CVW20-75	3"	#6 - #7	25	135



### CV Mesh Wheels

CVCIM-100	(1" cover)	All Mesh Sizes	1,000pcs./bag	(18 LBS per bag)
CVCIM-120	(1 1/2" cover)	All Mesh Sizes	500pcs./bag	(16 LBS per bag)



### CV Locking Wheels

are made to lock on to multiple rebar sizes from a #3 bar to a #6 bar. The points around the wheel create a minimal surface touch around the bar when it is installed, and our zip locking system holds the bar tightly in place to eliminate any chance of sliding. The CV Locking Wheels can be used for many concrete jobs and work such as precast structures, vaults, slabs and frames, foundations, bridges and much more.

SKU	Cover	Bar size	lbs/Box	Qty/Box
CVWL-40	1 1/2"	10mm - 20mm	25	400
CVWL-50	2"	10mm - 20mm	25	250



### C V Panel Pads

are designed to protect precast/prestressed units from breakage during storage, packaging, and shipping. CV Panel Pads can be snapped in half to create two pcs of 2 1/2 x 3 for better spacing around the unit.

SKU	Cover	lbs/Box	Qty/Box
CVPAD-26	4"	40	400



### CV Rebar End Spacers

are developed to create a protective overlapping for rebar ends in a vertical or horizontal application. The CV Rebar End pacers can space the rebar on either a 1" or 1-1/2" length from the sides of the forms and prevents surface rust of the concrete from corrosion or other construction chemicals. Solid designs and materials allow the CV Rebar Spacers to withstand heavy loads and applications.

SKU	Cover	Bar size	lbs/Box	Qty/Bag	Qty/Box
CVBT-25	1"	10mm - 20mm	25	500	500
CVBT-40	1 1/2"	10mm - 20mm	24	400	400



Made in Denmark

BSV has been manufacturing lifting grabs in Denmark for over 50 years; offering a complete line lifting clamps. The clamps listed in this catalog represent a small part of the line. Please visit our web site to see more lifting options. Weather it is a standard clamp, or custom grab, we can provide safe, high quality, lifting equipment to meet all of your requirements.

## Barrier Grab Type 1507



Scissor grab type 1507 is the easy way to lift and move road barriers using a reliable mechanical ratchet system. The grab is a top quality product and designed, engineered and manufactured in Denmark.

Grab type 1507	Jaw length	Span	Unit weight	WLL
150700	47 1/4" 1200 mm	7" 180 mm	383 lbs. 175 kg	4400 lbs. 2000 kg
150720	47 1/4" 1200 mm	7" 180 mm	385 lbs. 175 kg	7700 lbs. 3500 kg
150730	47 1/4" 1200 mm	7" 180 mm	475 lbs. 215 kg	9900 lbs. 4500 kg

Black or Grey non-marking pads available.

## BSV Block grab 262150

**BSV scissor grab type 262150 is the easy solution for lifting and moving concrete Lego block elements.**

The grab has an automatic locking system, which means that it grips every second time and **releases every second** time when operated by the crane operator.

It is also mounted with a **restrictor bar** to prevent clamping and personal injury.

The span of the grab is **400-800 mm (15 ¾-31 ½")** and it can lift up to **2,500 kg (5500 lbs)**.

All our grabs are 100% made at the BSV factory in Denmark and are proof-loaded at our testing branch and **supplied with test certificates**.

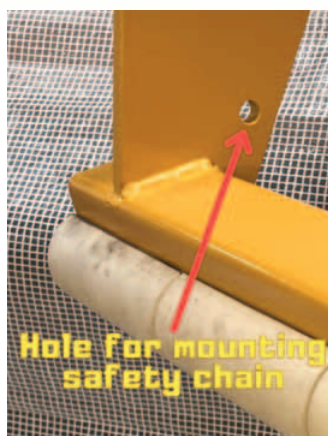
BSV keeps original spare parts in stock.



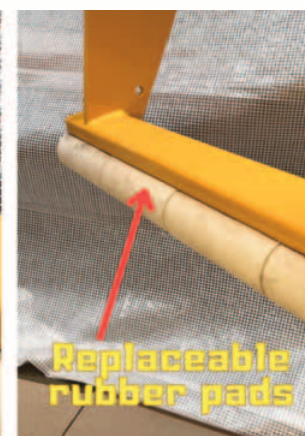
Automatic locking device



Greaseable bolts



Hole for mounting safety chain



Replaceable rubber pads



## Barrel Grab Model 685 HD

The BSV Barrel Grab is a mechanical grab designed to pick up barrels that range in diameter from 38" - 84". The model 685 HD has a safe working load of 6050 lbs. Larger capacity barrel grabs are available as a special order. This unit has a built in fork pocket.



## Pipe Grab Model RG

The BSV RB series of mechanical grabs are designed to safely lift smaller diameter pipe. Standard grabs are built to suit pipe from 6" to 24". Custom grabs are available for 30" - 62" pipe. Models are available with asymmetrical arms to allow closer stacking. Can be used with optional fork yoke.



## Large Block Grab Model 203/406

The BSV 203/406 Series is designed to lift large scale wall block.

Model 203 has a lifting range from 15 <sup>3</sup>/<sub>8</sub>" - 25 <sup>1</sup>/<sub>2</sub>", 1650 lbs. capacity.

Model 406 (pictured) has a lifting range of 15 <sup>3</sup>/<sub>8</sub>" - 25 <sup>1</sup>/<sub>2</sub>", 3300 lbs. capacity.



Shown with Optional Fork Yoke

### **BSV Scissor CLAMP model 760/50Z**

The width of this clamp can be adjusted from 15.75" to 42". A maximum safe working load of 3,300 lbs. Extremely versatile, ideal for multi-purpose use.



Built-in Fork Pockets

### **BSV 32/38**

The 32/38 will safely lift loads from 32" to 38" and up to 4070 lbs. This clamp will perform.



### **BSV Pallet Fork model PG 100/2-SSB-SBL self-balancing**

This model has a spring-loaded head so that the fork always remains horizontal, loaded or unloaded.

Lifting capacity of 4,400 lbs.

Fork adjustment 15.75" – 37.4"

Height adjusts to 102"

Extensive range of forks available



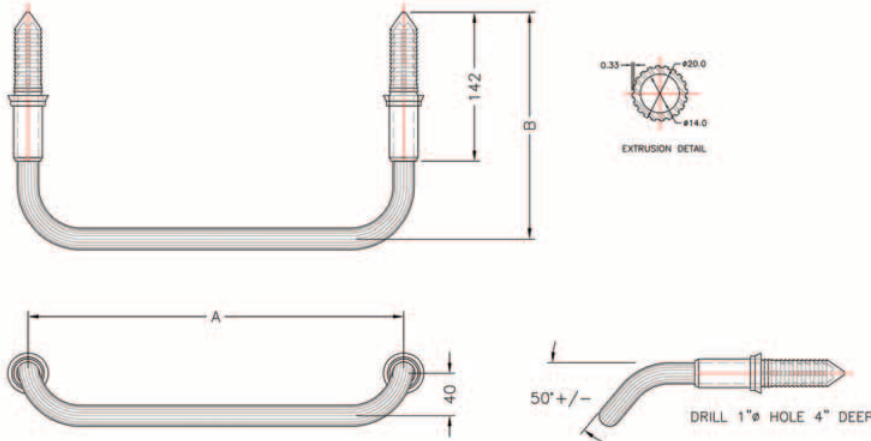
### **BSV SCISSOR CLAMP MODEL 10-38**

A lightweight clamp suitable for lifting curbs and other narrow stones. Lifts from 4" to 15" at a maximum safe working load of 1540 lbs.

## Model #350

Hollow to OPSD 405.010"

Uniquely ribbed anchor sleeve.  
Available in 12" and 16"



## CLIMBING RUNGS

Climbing rungs allow access to and egress from your underground infrastructure.

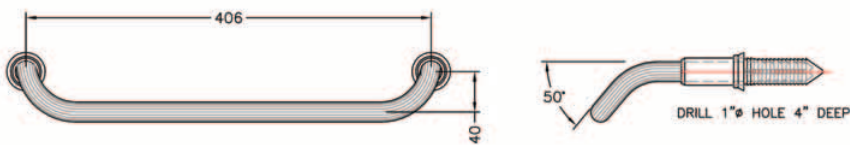
Climbing rungs are designed for permanent installation in maintenance holes, reservoirs, pumping stations, mines, underground chambers and vaults. Climbing rungs are an alternative to ladders and are most frequently found in factory installed in precast concrete maintenance hole and valve chamber products. Suitable for curved and flat wall structures.

- Suitable for new construction and existing infrastructure
- Flexible installation, cast in, drive in, bolt on
- Easy to install
- Designed for permanent installation
- Meet Ontario Provincial Standard Specifications and Drawings (OPSS and OPSD), ASTM C478, and BNQ
- Slip Resistant
- Available in aluminum, polyethylene coated aluminum and stainless steel type 316
- Impervious to temperature change, impact and vibration
- Standard climbing rungs available in both 304mm and 406mm widths
- Welded construction to CSA standards W47.1 and W47.2

## Model #355

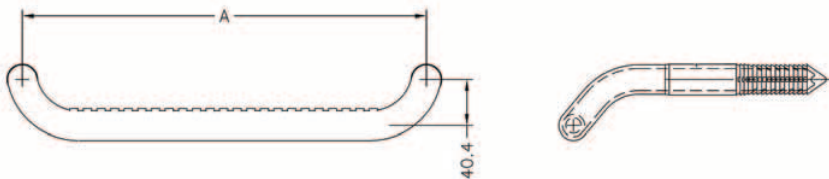
Solid to OPSD 405.020  
Aluminum.

Uniquely ribbed anchor sleeve.  
Available in 12" and 16"



## Model #360

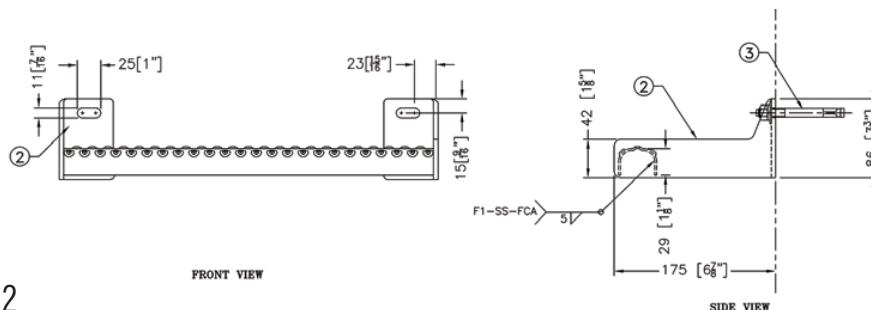
Polyethylene coated Aluminum. Available in 12" and 16"



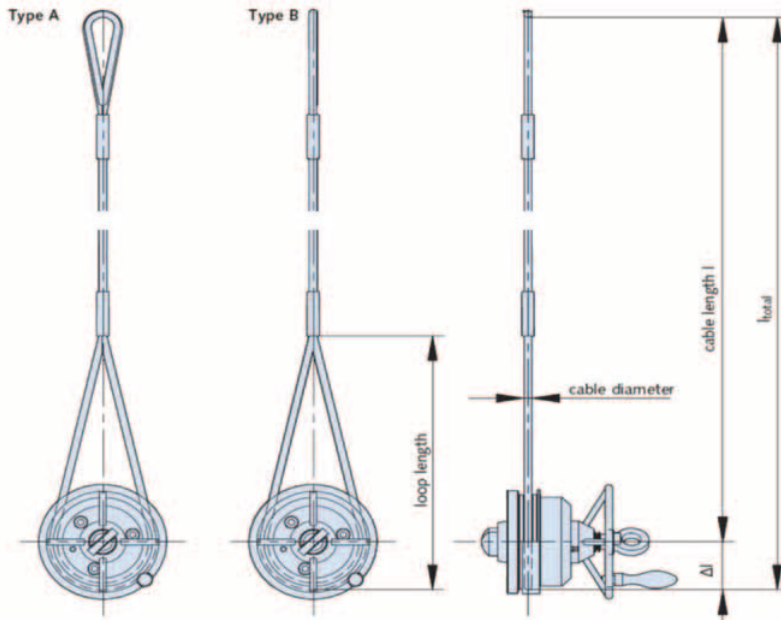
## Model #380

Stainless Steel Type 316.

Welded construction to CSA standards W47.1.  
Available in 16"



Climbing Rung inserts are available to suit a variety of structure diameters and manufacturing processes. These inserts ensure a consistently formed hole every time.



Using the turning and lifting link



The turning and lifting link before use.



Turn the handwheel to open the clutch.



Press tightly onto the anchor head.



Turn the handwheel to secure the lifting link to the anchor.



The handwheel is turned until the turning and lifting link sits tightly against the concrete.

Small diameters and low weight pipes can be easily positioned by hand using two lifting and turning links attached to two spherical head anchors installed exactly in the axial centre of gravity of the pipe.

Lifting and turning pipes using two hooks

Lifting



Rotating



Transporting / moving



The design concept of this lifting link makes it an optimal lifting device for shear loads as lifting and rotating are possible simultaneously; the STARCON Turning and lifting link is a manually operated lifting device.

The system consists of the lifting device and the cast-in STARCON Spherical head anchor. Precast elements, especially pipes, which have previously been lifted with the universal lifting head may not be subsequently lifted with the turning and lifting link.

Dimension — Turning and lifting link								
Article name	Link Order no. 0738.040-	Cable Order no. 0568.129-	Installation Order no. 0738.049-	for anchor	Cable Ø [mm]	l min. [m]	Δl [mm]	
1T	00001	00004	00004	1,3	10	0.8	60	
2T	00002			2,5	14	1.0	65	
4T	00003			4,0 and 5,0	18	1.2	70	
6T and 8T	00004			7,5 and 10,0	26	1.5	80	
12T and 20T	00005			15,0 and 20,0	34	1.6	100	
32T (NA 26T)	00006			32,0	42	2.0	120	

# LANDCON

LIFTING EQUIPMENT AND CONCRETE ACCESSORIES

## Confidence is the key word.

Since 1991 Landcon has been supplying concrete producers across North America with high quality, reasonably priced, accessory products. We have gone from working with a couple of local producers to supplying over 75 plants from coast to coast.

We have earned an excellent reputation for doing whatever it takes to help keep our customers production running as smoothly as possible. Whether you are around the corner, or across the country, we are here to work with you.

180 Steeles Ave. West., Suite 206, Thornhill, ON L4J 2L1

Canada – U.S. 1 866 303-3103

Tel: 416 739-7904 Fax: 416 739-9506

[www.landconproducts.com](http://www.landconproducts.com)

***SERVING THE INDUSTRY SINCE 1991***



***SAFETY    QUALITY    SERVICE***