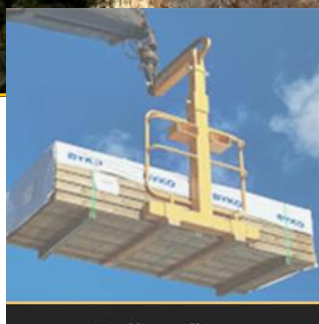
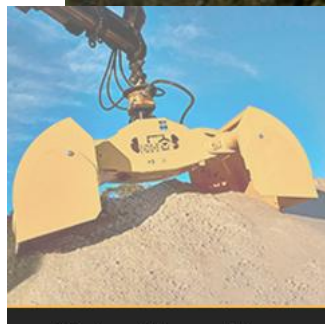




BSV KRANTILBEHØR A/S

Løftevej siden 1960 – Lifting equipment since 1960

**MADE IN
DENMARK**





KS II GRAB

BSV grab type KS II grab is the latest generation of BSV hydraulic grabs. The grab is primarily designed for construction work, which often places great demands on digging power, strength, and stability.

KS grabs are equipped with a built-in check valve inside the cylinder, which means that the load is retained even if a hose on the crane brakes.

The grab is available in different sizes from 350 to 1.000 liters and for grain buckets up to 2.000 liters. The grab is offered as a closed bucket grab as well as open grab with removable side plates, which can be mounted without use of hand tools.

This grab is designed with a low installation height and large opening. This grab is designed with a low installation height and large opening.

All KS II grabs are supplied as standard with an integrated anchor point (max 1000 Kg) for lifting chain.

We can also offer extra welding hooks, which can lift to 3.500 kg.



KS II grab can be used to handle e.g. sand, soil, gravel, asphalt, etc. Customers like this grab's versatility, efficiency, and long durability.

Article no.	Qty.	Description	Dimension
21-KS-00-214001	1	KSII 385 G	Closed Bucket
21-KS-00-214002	1	KSII 500 G	Closed Bucket
21-KS-00-214003	1	KSII 700 G	Closed Bucket
21-KS-00-214010	1	KSII 380 GSX	Open Bucket
21-KS-00-214011	1	KSII 500 GSX	Open Bucket
21-KS-00-214012	1	KSII 530 GSX	Open Bucket
21-KS-00-214013	1	KSII 700 GSX	Open Bucket
Fittings for KS II grab			
21-KS-00-214091	1 set	Side plates for open bucket	500 GSX
21-KS-00-214031	1 set	Side plates for open bucket	700 GSX
20-0000-156620	1	Quick changing tube	ø69 140X140
20-0000-156601	1	Quick change shaft	ø69 140X140
21-KS-00-214099	1 set	Load hooks 3500 Kg	Max 3500 Kg
21-T50-156650	1	BSV Rotator T50	Max 5000 Kg
20-0000-380071	1 set	T50 Tubes Grab/rotator	With quick release
20-0000-380008	1 set	T50 Tubes Grab/rotator	Without quick release

All measures are indicated in mm and all weights in kgs.



COMBI GRAB

The COMBI grab is BSV's series of hydraulic smaller grabs. The Combi grab series consists of a hydraulic unit, on which both shovels for sand, branches, wood, solid wood, granite stone, curbstone etc. can be mounted. and many other versatile tasks. Due to the possibility of tool change and great flexibility, it gives the grab series its name, Combi.

The buckets are delivered as both open and closed buckets. The Grab series is primarily designed for use in smaller hydraulic cranes, mini diggers, etc. COMBI grab is flexible and versatile and is the right choice for companies with many small and different tasks.

One of the advantages of this type of crane grab is that quick tool changes can be made without the use of hand tools.



COMBI 722 Hydraulic unit

Article no.	Description
21-COMBI-00-072201	COMBI 722 Hydraulic unit

COMBI 722 Bucket (closed)

Article no.	Description
21-COMBI-31-072215	70 G ltr. bucket
21-COMBI-31-072278C	90 G ltr. bucket
21-COMBI-31-072211	120 G ltr. bucket
21-COMBI-31-072210	200 G ltr. bucket

COMBI 722 Bucket (open)

Article no.	Description
21-COMBI-31-072248B	120 GSX ltr. bucket*
21-COMBI-31-072248A	200 GSX ltr. bucket*

Side plates for open COMBI 722

Article no.	Description
21-COMBI-TG072248C	1 set side plates for 120+200 GSX bucket

Digging tines for COMBI 722

Article no.	Description
21-00-123703	1 set digging tines of 5 pcs. tines
21-00-123704	1 set digging tines of 9 pcs. tines
21-00-123702	1 pcs. digging tine



COMBI 722 GRAB

Combi 722 Fittings and tools

Article no.	Description
21-COMBI-31-072213	Manure arms 90 UNI
21-COMBI-31-072214	Manure arms 120 UNI

Article no.	Description
21-COMBI-31-072231A	Arms for beams BT
21-COMBI-31-072240A	Arms for stones ST

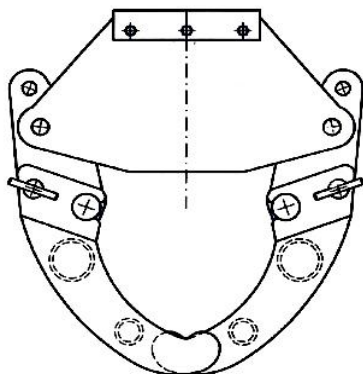
Article no.	Description
21-COMBI-31-072231A	Arms for beams BT
21-COMBI-31-072240A	Arms for stones ST

Article no.	Description
21-COMBI-31-072274A	Ditch bucket
Drawing no.: 072274A	

Article no.	Description
21-COMBI-31-072265	Stone bucket w/long arms
Drawing no.: 072265	

Article no.	Description
21-COMBI-31-072295A	Stone bucket ST-HD
Drawing no.: 072295A	

Article no.	Description
21-COMBI-31-072243	BT-S Arm
Drawing no.: 072243	



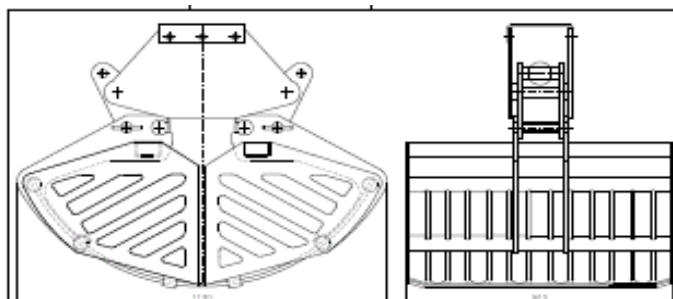
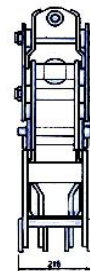
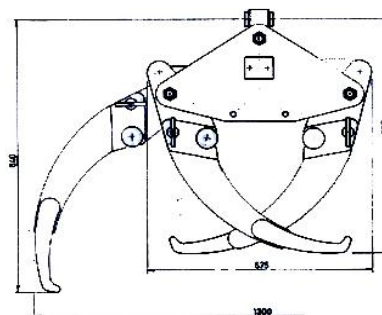
Grab for manure



Grab for wood



Grab for stones





BSV PALLET FORKS

Adjustable - bow and eye standard version

Article no.	Description
24-PG-028202	PG 100/2 SSB tube forks PG
24-PG-136207	100/2 SSB solid forks PG
24-PG-213200	120/1,75 SSB tube forks
24-PG-240002	PG 120/3 SSB solid forks

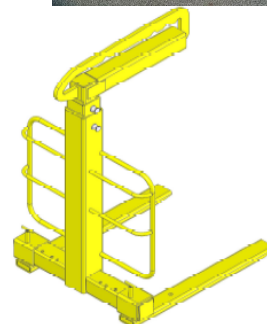
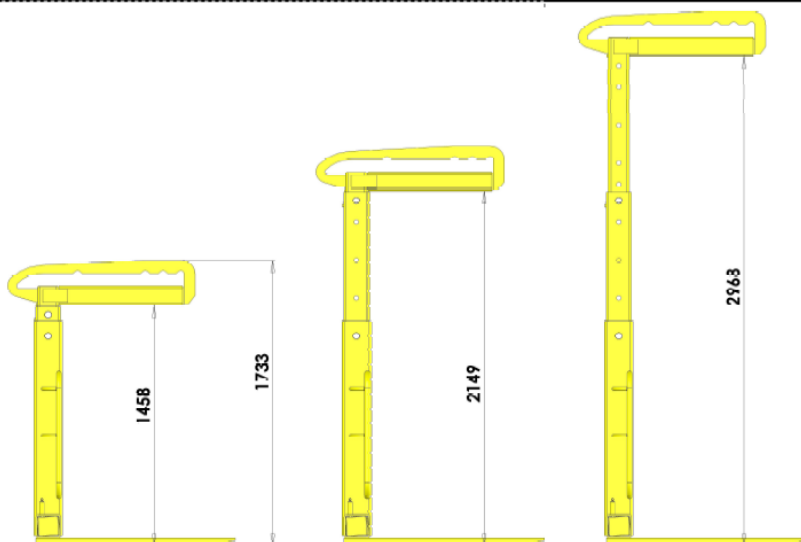
Can be offered with lifting eye or rotator fitting.



Crane fork with extended internal height

BSV has developed this telescopic pallet fork for handling heavy and high materials, e.g. insulation, wooden packages and other building materials. BSV pallet forks are made of high-strength steel, are extremely strong and robust and has a low weight.

Article no..	Description
24-PG-00-270000	PG 120/1,75 SSB, tele, tube forks
24-PG-00-270002	PG 120/1,75 SSB, tele, solid forks
24-PG-00-281000	PG 120/3 SSB, tele, solid forks





BSV self-balancing crane fork

BSV offers wide range of self-balancing crane forks. The self-balancing function makes it particularly suitable for use in tower cranes, overhead cranes, etc. The center of gravity is adapted to the most used packaging types and types of pallet goods.

This pallet fork balances itself, both when it is empty and when it has a minimum load on it.

This kind of pallet fork can lift 2 or 3 tons.

For the self-balancing pallet fork with WLL 2 ton, it takes a minimum load of 400 kgs in order to work.

For the self-balancing pallet fork with WLL 3 ton, it takes a minimum load of 800 kgs in order to work.



Article no.	Description
24-PG-028201	PG 100/2 SSB SBL, pipe forks 970 mm
24-PG-240006	PG 120/3 SSB SBL, solid forks 970 mm
24-PG-240008	PG 120/3 SSB SBL, solid forks 1170 mm

BSV crane fork for handling and turning plaster boards

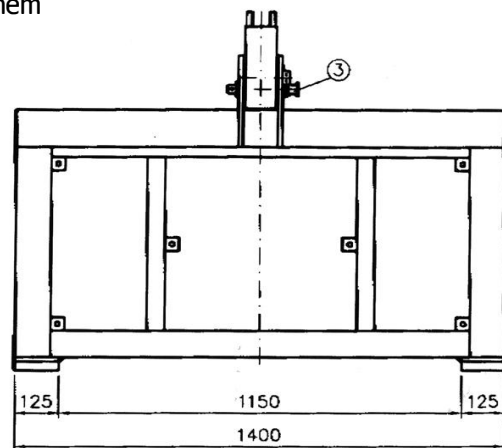
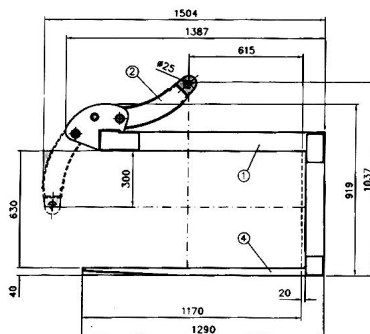
BSV offers 3 types of crane forks for turning plaster boards. BSV pallet forks are made of high-strength steel, are extremely strong and robust and have a low weight. Our crane forks for turning plates are especially designed to turn and handle plasterboards and board packages and to make it easier to handle boards through e.g. doors and windows in multi-storey buildings. This crane fork can handle plasterboards in vertical and horizontal position.

This crane fork is designed with a pivotable lifting arm that can be adjusted for empty lifting, horizontally and vertically lifting. It is possible to handle and move packages that are lying down, or lift them from lying position and turn them vertically and lift them from there, just by turning the lifting arm on the crane fork.

This crane fork can be supplied with suspension suitable for the current crane.



Article no.	Description
24-PG-153750	PG 120/1,8 VG
24-PG-153777	PG 90/1,8 VG
24-PG-153779	PG 90-120/1,8 VG





BSV MECHANICAL SCISSOR GRABS

All models of BSV Mechanical Scissor Grabs are equipped with a patented catch system ensuring a 100 per cent automatic working procedure.

Once the grab has been placed on top of the load, a locking hook is released and the grab holds the load by means of the scissor arms until it is placed in the wanted spot and the grab relieved of its load.

The procedure is then repeated with the next load.

The grabs are supplied with a stop device limiting the closing of the grabs to the minimum span.

The grabs are equipped with replaceable rubber or steel pads and further, many grabs are equipped with replaceable location rollers. Please see specifications.

All grabs are tested in a computerized test bed and supplied together with a test load certificate. If the grabs are to be applied for high-lift cranes, special regulations for safe-guarding the load must be observed. Safety nets in various designs can be offered.

BSV Lifting Grabs (flags/kerbstones)

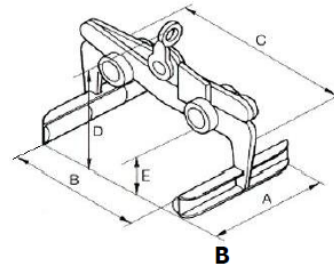
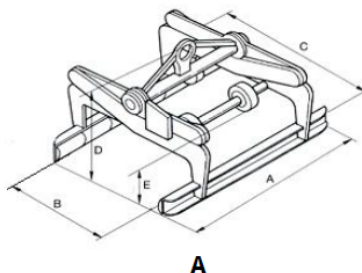
Type	A	B	C	D	E	Unit weight	Rubber pad	Max. load (SWL)
406	1.200	400-650	925	490-590	200	125	GS20	1.500
608	1.200	600-850	1.115	510-615	205	140	GS20	1.500
801	1.200	800-1.050	1.335	560-665	245	150	GS20	1.500
203	600	400-650	925	490-590	200	60	GS20	700
304	600	600-850	1.115	510-615	205	70	GS20	700
400	600	800-1.050	1.335	560-665	245	80	GS20	700

All measures are indicated in mm and all weights in kgs.

Scissor grab, type 406



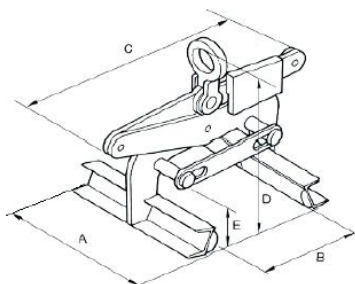
Article no.	Description	Princip
23-305/120-031903	305/120	A
23-406/120-00-053101	406/120	A
23-608-032002	608/120	A
23-801/120-083320	801/120	A
23-155/60-031902	155/60	B
23-203/60-053150	203/60	B
23-304/60-032001	304/60	B
23-400/60-083350	400/60	B



BSV Lifting Grabs (kerbstones/elements)

Type	A	B	C	D	E	Unit weight	Rubber pad	Max. load (SWL)
ET 2469	100	125-150	600	445-545	160	17	GS20sm	100
ET 2468	100	914	1.002	275-400	60	14	RG	100
ET 2474	300	300-1000	1110	275-400	116	35	GS20	300
ET 5-15/300	400	50-150	620	520	150	35	GS20	300
ET 15-35/300	400	150-350	625	600	150	35	GS20	300
ET 5-30/500	600	50-300	1.080	650	200	50	GS20	500
ET 10-38/700	600	100-380	790	650	200	55	GS20	700

Article no.	Description
23-ET12,5/15-246901	ET 2469
23-ET91,4-246801	ET 2468
23-ET30/100-247401	ET 2474
23-ET5/15-103101	ET 5-15/300
23-ET15/35-033001	ET 15-35/300
23-ET5/30-123201	ET 5-30/500
23-ET10/38-063801	ET 10-38/700



Scissor Grab, type ET 2469





BSV Multi Grabs (flags/kerbstones)

Type	A	B	C	D	E	Weight	Rubber pad	Max. load (SWL)
Multi 760/18	1.200	350-1.050	1.280	865	180	250	GS20	1.500
Multi 760/50Z	1.200	400-1.070	1.280	1.150	180-500	300	GS20	1.500

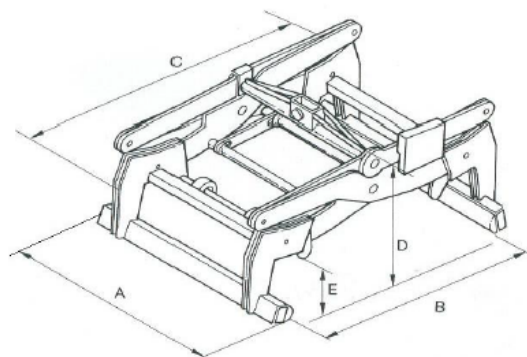
All measures are indicated in mm and all weights in kgs.

Article no.	Description
23-760/18-076040	Multi 760/18
23-760/50-130901	Multi 760/50Z

Scissor Grab, type Multi 760 Model 50Z



The span of this grab can be adjusted from 400 to 1000 mm and it is available in several height clearance variants. Multigrabs have separate jaw sections so that different lengths of jaw can be used on the same grab.



BSV Lifting Grabs for concrete pipes

Type	A	B	C	D	E	Weight	Rubber pad	Max. load (SWL)
RB 15/25	100	208-325	510	530	210	21	Steel	250
RB 20/30	410	250-400	625	650	310	50	Steel/RB	500
RB 30/40	410	390-550	740	720	360	65	Steel/RB	600
RB 40/50	410	515-655	900	840	435	85	Steel/RB	900
RB 50/60	410	630-800	1.040	970	580	120	Steel/RB	1.600

All measures are indicated in mm and all weights in kgs.

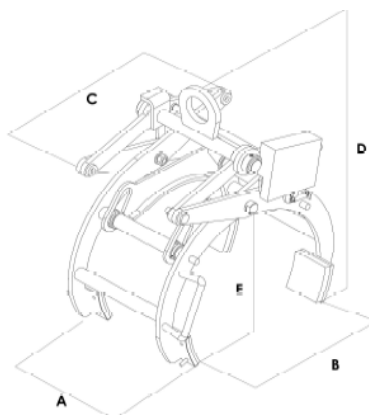
Several models are available with asymmetrical construction of arms, thus enabling lifting of pipes positioned closely side by side.

Article no.	Description
23-RB15/25-174501	RB 15/25
23-RB20/30-022101	RB 20/30
23-RB30/40-016301	RB 30/40
23-RB40/50-016801	RB 40/50
23-RB50/60-016701	RB 50/60

Scissor Grab, type RB



For concrete pipes. Standard grabs to suit pipes from 15 to 60 cm. Special grabs for pipes from 80 to 160 cm.





Mechanical grab for concrete Lego blocks



BSV scissor grab type 262150

BSV scissor grab type 262150 is the easy solution for lifting and moving Lego block concrete elements..

The grab has an automatic locking system, which means that it grips every second time and releases every second time when operated by the crane operator. It is also mounted with a restrictor bar to protect the operator of the crane. The span of the grab is 400-800 mm and it can lift up to 2.500 kg.

The grab is top quality product and all BSV grabs are 100 % made in Denmark.

The grabs are delivered with a test certificate and, of course, a CE declaration. In addition to the standard colour, remember that BSV can offer to paint in other colours.

Grab type	Jaw length	Span	Unit weight	WLL
262150	800 mm	400-800 mm	200 kg	2500 kg

Mechanical grab for road traffic barriers and jersey barriers



Scissor grab type 1507 is the easy way to lift and move road traffic barriers and jersey barriers. The grab is a top quality product, designed and engineered in Denmark and manufactured in three different lifting capacities.

Grab type 1507	Jaw length	Span	Unit weight	WLL
150700	1200 mm	180 mm	175 kg	2500 kg
150720	1200 mm	180 mm	175 kg	3500 kg
150730	1200 mm	180 mm	215 kg	4500 kg



BSV hydraulic grab type HY 78-140

BSV offers a wide range of hydraulic clamps constructed with double led parallelogram arms. The clamps are developed both for lifting palletised goods and non-palletised goods.

HY 78-140 is a simple and sturdy grab with one cylinder with span from 780-1.400 mm and adjustable free height from 800 - 1.200 mm.

The advantages of a BSV HY Clamp are substantial both for high efficiency, safety and durability:

- The parallelogram arms secure an absolute minimum demand for space between pallets/goods
- High force pressure
- Adjustable contact height
- Constructed with one hydraulic cylinder which synchronize the arms mechanically.
This secures that the suspension always is centred over the load
- High wrench- and deflection stability.
- 100% fully welded construction
- Manufactured in high grade steel
- Detachable steering and slide plates in main carriage
- Low build height
- Detachable rubber jaws

All HY clamps are mounted with pilot operated counter valve and excess-pressure valve.

The HY 78 -140 clamp series contains clamps with firm height as well as adjustable height. The clamps are delivered with both firm jaw sections as well as detachable jaw sections. This makes it possible to choose the right length of jaws suitable for the purpose.

Article no.	Description
21-HY78-140-248001	HY78-140





BSV Rotator T50 - 5000 kg.

Technical data	
Article no.	21-T50-156650
Rotation	Continuous
Max. load, kg.	5.000 kg.
Max. torque	800 Nm
Built-in height, no adapter	235 mm.
Max. working pressure	250 bar
Unit weight, kg.	28 kg.



Baltrotor GR30 - 3.000 kg.

Technical data	
Article no.	28-GR30
Rotation	Unlimited
Max. vertical lift, kg.	3.000 kg.
Turningmoment at 250 (bar)	720 Nm (72 kgm)
Oil flow l/min.	min. 20 l/min.
Unit weight, kg.	16 kg.
Max. pressure (bar)	Rotator ←R→ 250
	Grab G ←→ 200
	Grab G →← 300



Baltrotor GR30 PF - 3.000 kg.

Technical data	
Article no.	28-GR30PF
Rotation	Unlimited
Max. vertical lift, kg.	3.000 kg.
Turningmoment at 250 (bar)	720 Nm (72 kgm)
Oil flow l/min.	min. 20 l/min.
Unit weight, kg.	22 kg.
Max. pressure (bar)	Rotator ←R→ 250
	Grab G ←→ 200
	Grab G →← 300





BSV Rotator GR465 - 4.500 k

Technical data	
Article no.	28-GR465
Rotation	Unlimited
Max. vertical lift, kg	4.500 kg
Turningmoment at 250 (bar)	1.000 Nm (100 kgm)
Oil flow L/min.	min. 20 l/min.
Unit weight, kg.	29 kg
Max. pressure (bar)	Rotator ← R → 250 Grabbe G ← → 200 Grabbe G → ← 300



BSV Rotator GR55 - 5.500 k

Technical data	
Article no.	28-GR55
Rotation	Unlimited
Max. vertical lift, kg	5.500 kg
Turningmoment at 250 (bar)	1.300 Nm (100 kgm)
Oil flow L/min.	min. 20 l/min.
Unit weight, kg.	29 kg
Max. pressure (bar)	Rotator ← R → 250 Grabbe G ← → 200 Grabbe G → ← 300



ACCESSORIES FOR BSV PRODUCTS

Tube suspension



Article no.	Description	Dimension
20-0000-177601	Tube suspension	Ø50 120X120
20-0000-156623	Tube suspension	Ø50 140X140
20-0000-156620	Tube suspension	Ø69 140X140
20-0000-156625	Tube suspension	Ø75 140X140
20-0000-156630	Tube suspension	Ø60 140x140
20-0000-177605	Tube suspension	Ø60 120x120

Adapter



Article no.	Description	Dimension
20-0000-156624	Adapter	Ø75 140x140
20-0000-156601	Adapter	Ø69 140x140
20-0000-177701	Adapter	Ø50 120x120

Rotator hook



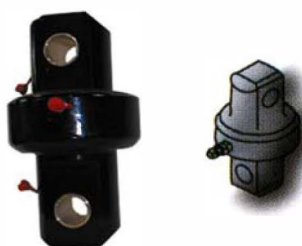
Article no.	Description	Dimension
20-0000-053006	Rotator hook	Bane dist. 52mm/Ø25
20-0000-053007	Rotator hook	Ø70xØ25/Ø30

Rocking suspension



Article no.	Description	Dimension
20-0000-031033	Rocking suspension	Bottom plate 140X140
20-0000-175801	Rocking suspension	Bottom plate 120X120

Revolving suspension



Technical data	
Article no.	20-0000-021901
Max. rotation	Continuous
Fitting holes	30 mm.
Bush for fitting holes, mm.	30/25X50
Built-in height, mm.	120 mm.
Unit weight, kg.	7 kg.
Max. load, kg.	3,500 kg.

ACCESSORIES FOR BSV PRODUCTS

Connection link for crane

Pic. 1



Pic. 1
If there are 2 banes on the erane which we have to fit between.

Pic. 2



Pic. 2
If there is a bloek on the erane which we have to fit around.

Please inform which type of connecting link you wish

For Rotator T50

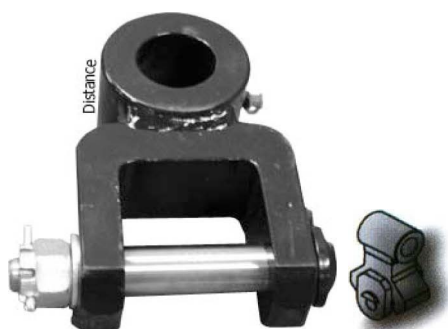
Article no.	Dimensions	Cranetype	Bruttopris
20-0000-1554246	ø28x69 Fig 1	HMF	1.967
20-0000-155401	ø30x69 Fig 1	HMF	1.967
20-0000-155402	ø40x60 Fig 1	HMF	1.967
20-0000-155403	ø40x96 Fig 1	HMF	1.967
20-0000-155404	ø45x78 Fig 1	Hiab	1.967
20-0000-155405	ø30 Fig 2	Palfinger	1.967
20-0000-155407	Basic unit	Basic unit	1.493



ACCESSORIES FOR BSV PRODUCTS

Connection link for crane

Pic. 1



Pic. 1

If there are 2 banes on the crane which we have to fit between.

Pic. 2



Pic. 2

If there is a block on the crane which we have to fit around.

Please inform which type of connection link you wish

For GR 30 + GR 30PF and GR465

Article no.	Dimensions	Crane type
20-GR30-239417	Ø28X69 Fig 1	HMF
20-GR30-239404	Ø30X69 Fig 1	HMF
20-GR30-239405	Ø40X60 Fig 1	HMF
20-GR30-239407	Ø45X78 Fig 1	Hiab
20-GR30-239400	Basic unit	Basic unit



G30

For GR 55M

Article no.	Dimensions	Crane type
20-GR55-239314	Ø28X69 Fig 1	HMF
20-GR55-239303	Ø30X69 Fig 1	HMF
20-GR55-239304	Ø40X60 Fig 1	HMF
20-GR55-239305	Ø40X96 Fig 1	HMF
20-GR55-239306	Ø45X76 Fig 1	Hiab
20-GR55-239308	Ø30x70 Fig 2	Palfinger
20-GR55-239300	Basic unit	Basic unit



GR 55



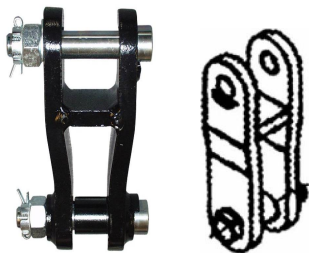
Accessories for BSV products

Lifting eye



Article no. .	Description	Dimensions
20-0000-042901	Lifting eye for PG 2T	2T
20-0000-240049	Lifting eye for PG 3T	3T

Rotator fitting



Article no.	Description	Dimensions
20-0000-083500	Rotator fitting	2T ø25x50
20-0000-083502	Rotator fitting	3T ø25x50
20-0000-083518	Rotator fitting	2T/3T ø30/70mm axel
20-0000-083519	Rotator fitting	2T/3T ø25/70mm axel
20-0000-083501	Rotator fitting	2T/3T ø25/64mm axel

Rotator fittings with tube Ø70x30



Article no.	Description	Dimensions
20-0000-102601	Rotator fitting 2T	with tube ø70x30
20-0000-102614	Rotator fitting 3T	with tube ø70x30

Fork pockets



Article no.	Description	Dimension
24-PG-00-269540	Fork pockets f. PG	2T (185x50mm)
24-PG-00-269545	Fork pockets f. PG	2T (165x65 mm)
24-PG-00-269550	Fork pockets f. PG	3T (165x65 mm)

Pallet stop



Article no.	Description	Dimensions
24-PG-00-269520	Pallet stop for 2t PG	2T
24-PG-00-269530	Pallet stop for 3t PG	3T

HOSE KIT



Rotator/Crane (Pic. 1)

Article no.	Description	Dimension
20-0000-380050	Hose kit 1000 MM	M14X1,5 with quick release coupling 1/2"
20-0000-380051	Hose kit 1000 MM	M18X1,5 with quick release coupling 1/2"
20-0000-380052	Hose kit 1200 MM	M14X1,5 with quick release coupling 1/2"
20-0000-380053	Hose kit 1200 MM	M18X1,5 with quick release coupling 1/2"
20-0000-380060	Hose kit 1000 MM	M14X1,5 with quick release coupling 3/8"
20-0000-380061	Hose kit 1000 MM	M18X1,5 with quick release coupling 3/8"
20-0000-380062	Hose kit 1200 MM	M14X1,5 with quick release coupling 3/8"
20-0000-380063	Hose kit 1200 MM	M14X1,5 with quick release coupling 3/8"
20-0000-380054	Hose kit 1000 MM	M14X1,5 without quick release coupling 1/2"
20-0000-380055	Hose kit 1000 MM	M18X1,5 without quick release coupling 1/2"
20-0000-380056	Hose kit 1200 MM	M14X1,5 without quick release coupling 1/2"
20-0000-380057	Hose kit 1200 MM	M18X1,5 without quick release coupling 1/2"

The prices are in EURO/unit.

Rotator/Grab (Pic. 2)

Article no.	Description
20-0000-380005	Hose kit T20/COMBI 722
20-0000-380008	Hose kit T50 SHV KS

The prices are in EURO/unit.